



Actividad Turística de la Ciudad de México Indicadores 2000 - 2012

Dirección General de Planeación y Desarrollo Turístico



Indice

Página

| | | |
|---|--|------|
| ● | Resumen de Indicadores Turísticos 2000-2012 | → 1 |
| ● | Derrama económica de turistas hospedados en hoteles, 2000-2012 | → 2 |
| ● | Gasto promedio por turista hospedado, 2000-2012 | → 3 |
| ● | Empleos en restaurantes y hoteles, 2000-2012 | → 4 |
| ● | Turistas hospedados en hoteles, 2000-2012 | → 5 |
| ● | Turistas hospedados en hoteles por categoría, 2000-2012 | → 6 |
| ● | Porcentaje de ocupación por categoría, 2000-2012 | → 7 |
| ● | Llegada de turistas por Delegación, 2001-2012 | → 8 |
| ● | Porcentaje de ocupación por Delegación, 2001-2012 | → 9 |
| ● | Llegada de turistas a hoteles por Zona Turística, 2001-2012 | → 10 |
| ● | Porcentaje de ocupación por Zona Turística 2001-2012 | → 11 |
| ● | Establecimientos de hospedaje por categoría, 2000-2012 | → 12 |
| ● | Cuartos por categoría, 2000-2012 | → 13 |
| ● | Vuelos comerciales en el Aeropuerto Internacional de la Ciudad de México, 2000-2012 | → 14 |
| ● | Movimiento de Pasajeros en el Aeropuerto Internacional de la Ciudad de México, 2000-2012 | → 15 |
| ● | Porcentaje de ocupación promedio diaria, 2000-2012 | → 16 |
| ● | Visitantes a centros del INAH, 2000-2012 | → 17 |
| ● | Corridas de origen por Centrales de Autobuses, 2000-2012 | → 18 |
| ● | Pasajeros transportados por Centrales de Autobuses, 2000-2012 | → 19 |
| ● | Personas atendidas en módulos de información turística, 2002-2012 | → 20 |
| ● | Visitantes nacionales y extranjeros atendidos en módulos de información turística, 2002-2012 | → 21 |
| ● | Llamadas atendidas a través del 01 800, 2007-2012 | → 22 |
| ● | Número de visitas al Sitio Oficial, 2007-2012 | → 23 |
| ● | Emisión de pases turísticos por entidad, 2009-2012 | → 24 |



Cuadro 1
Resumen de Indicadores Turísticos, 2000-2012

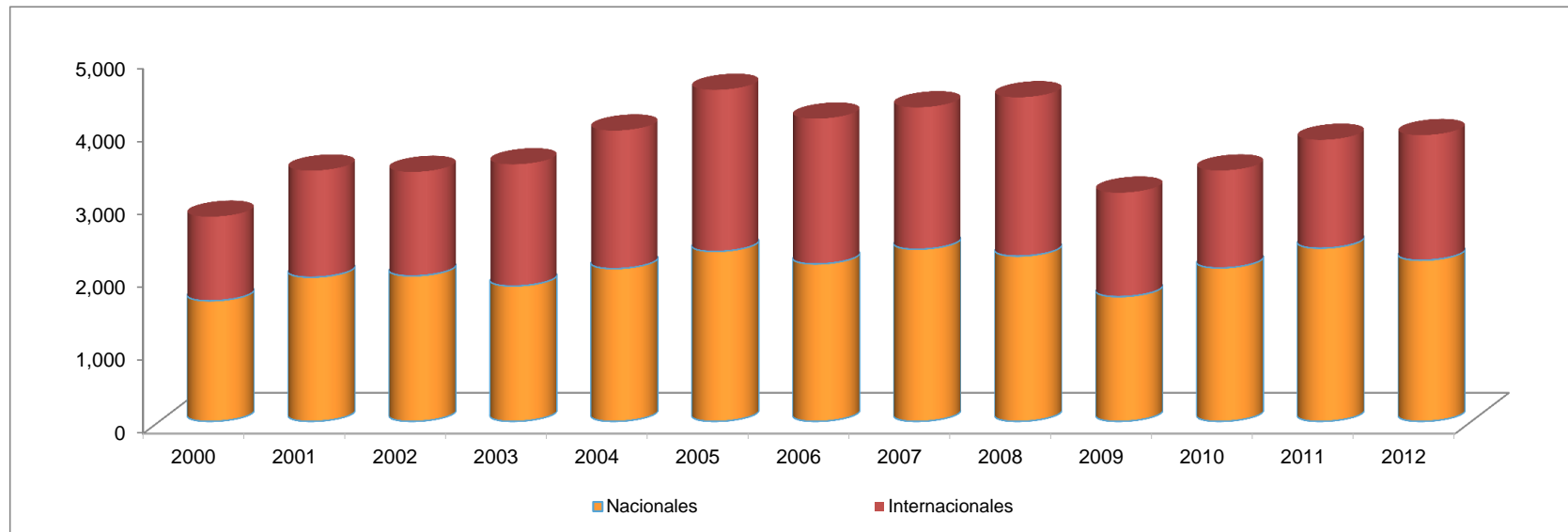
| Concepto | 2000 | 2001 | 2002 | 2003 | 2004 | 2005 | 2006 | 2007 | 2008 | 2009 | 2010 | 2011 | 2012 |
|---|------------|------------|------------|------------|------------|------------|------------|------------|------------|------------|------------|------------|------------|
| Habitaciones | 46,302 | 46,978 | 45,473 | 46,386 | 46,326 | 47,462 | 48,409 | 48,724 | 48,776 | 48,618 | 48,534 | 48,888 | 49,194 |
| Porcentaje de Ocupación | 61.57% | 59.66% | 56.56% | 51.82% | 54.12% | 55.70% | 54.67% | 56.45% | 55.84% | 45.60% | 52.28% | 56.88% | 62.25% |
| Llegada de Turistas | 9,123,994 | 10,451,936 | 10,170,832 | 10,438,037 | 11,615,335 | 12,212,665 | 11,149,161 | 11,057,203 | 11,565,225 | 9,966,507 | 11,074,690 | 12,380,036 | 12,305,483 |
| Nacionales | 7,025,413 | 7,946,130 | 7,859,183 | 7,842,537 | 8,804,025 | 8,933,568 | 8,326,252 | 8,345,718 | 8,714,426 | 8,014,024 | 9,244,133 | 10,306,442 | 10,028,535 |
| Internacionales | 2,098,581 | 2,505,806 | 2,311,649 | 2,595,500 | 2,811,310 | 3,279,097 | 2,822,909 | 2,711,485 | 2,850,799 | 1,952,483 | 1,830,557 | 2,073,594 | 2,276,948 |
| Turistas Noche ^{1/} | 18,466,741 | 22,260,829 | 20,944,995 | 21,283,472 | 23,964,630 | 24,873,188 | 21,668,294 | 21,187,529 | 22,012,448 | 18,203,554 | 20,579,497 | 23,345,602 | 24,313,986 |
| Nacionales | 13,259,657 | 16,032,620 | 15,290,244 | 15,588,976 | 17,879,287 | 17,938,066 | 15,858,353 | 15,586,867 | 16,060,447 | 14,128,931 | 16,394,427 | 18,771,726 | 19,440,545 |
| Internacionales | 5,207,084 | 6,228,209 | 5,654,751 | 5,694,496 | 6,085,343 | 6,935,122 | 5,809,941 | 5,600,662 | 5,952,001 | 4,074,623 | 4,185,070 | 4,573,876 | 4,873,441 |
| Cuartos Ocupados ^{2/} | 9,592,739 | 10,227,139 | 9,552,045 | 8,765,373 | 9,220,339 | 9,501,928 | 9,588,138 | 10,009,109 | 9,903,684 | 8,104,301 | 9,277,614 | 10,108,701 | 10,889,550 |
| Nacionales | 6,912,100 | 7,536,432 | 7,102,345 | 6,506,868 | 6,941,290 | 6,877,987 | 7,082,458 | 7,513,382 | 7,426,959 | 6,389,023 | 7,427,864 | 8,151,478 | 8,718,968 |
| Internacionales | 2,680,639 | 2,690,707 | 2,449,700 | 2,258,505 | 2,279,049 | 2,623,941 | 2,505,680 | 2,495,727 | 2,476,725 | 1,715,278 | 1,849,750 | 1,957,223 | 2,170,582 |
| Estadia ^{3/} | 2.02 | 2.13 | 2.06 | 2.04 | 2.06 | 2.04 | 1.94 | 1.92 | 1.90 | 1.83 | 1.86 | 1.89 | 1.98 |
| Nacionales | 1.89 | 2.02 | 1.95 | 1.99 | 2.03 | 2.01 | 1.90 | 1.87 | 1.84 | 1.76 | 1.77 | 1.82 | 1.94 |
| Internacionales | 2.48 | 2.49 | 2.45 | 2.19 | 2.16 | 2.11 | 2.06 | 2.07 | 2.09 | 2.09 | 2.29 | 2.21 | 2.14 |
| Densidad ^{4/} | 1.93 | 2.18 | 2.19 | 2.43 | 2.60 | 2.62 | 2.26 | 2.12 | 2.22 | 2.25 | 2.22 | 2.31 | 2.23 |
| Derrama económica (mdm) ^{5/6/} | 2,808.94 | 3,440.05 | 3,422.33 | 3,526.01 | 3,988.42 | 4,545.40 | 4,151.45 | 4,306.22 | 4,443.80 | 3,137.70 | 3,441.80 | 3,861.60 | 3,926.19 |
| Gasto Promedio (dólares) | 307.86 | 329.13 | 336.48 | 337.81 | 343.38 | 372.20 | 377.05 | 422.97 | 395.02 | 313.16 | 314.96 | 290.45 | 321.78 |

- Notas:
- ^{1/} Es la suma durante un periodo determinado de turistas hospedados cada día. Se obtiene al multiplicar los cuartos ocupados por la densidad.
- ^{2/} Suma de cuartos ocupados diarios en un periodo determinado.
- ^{3/} Lapso de permanencia de una persona o personas en determinado lugar.
- ^{4/} Número promedio de personas que se hospedan en un cuarto.
- ^{5/} Se refiere al gasto realizado por los turistas hospedados.
- ^{6/} Cifras estimadas. Para 2011 y 2012 cifras revisadas.
- n.d. No disponible

Fuente: Secretaría de Turismo del Gobierno del Distrito Federal.



Gráfica 1
Derrama económica de turistas hospedados en hoteles, 2000-2012
(millones de dólares)



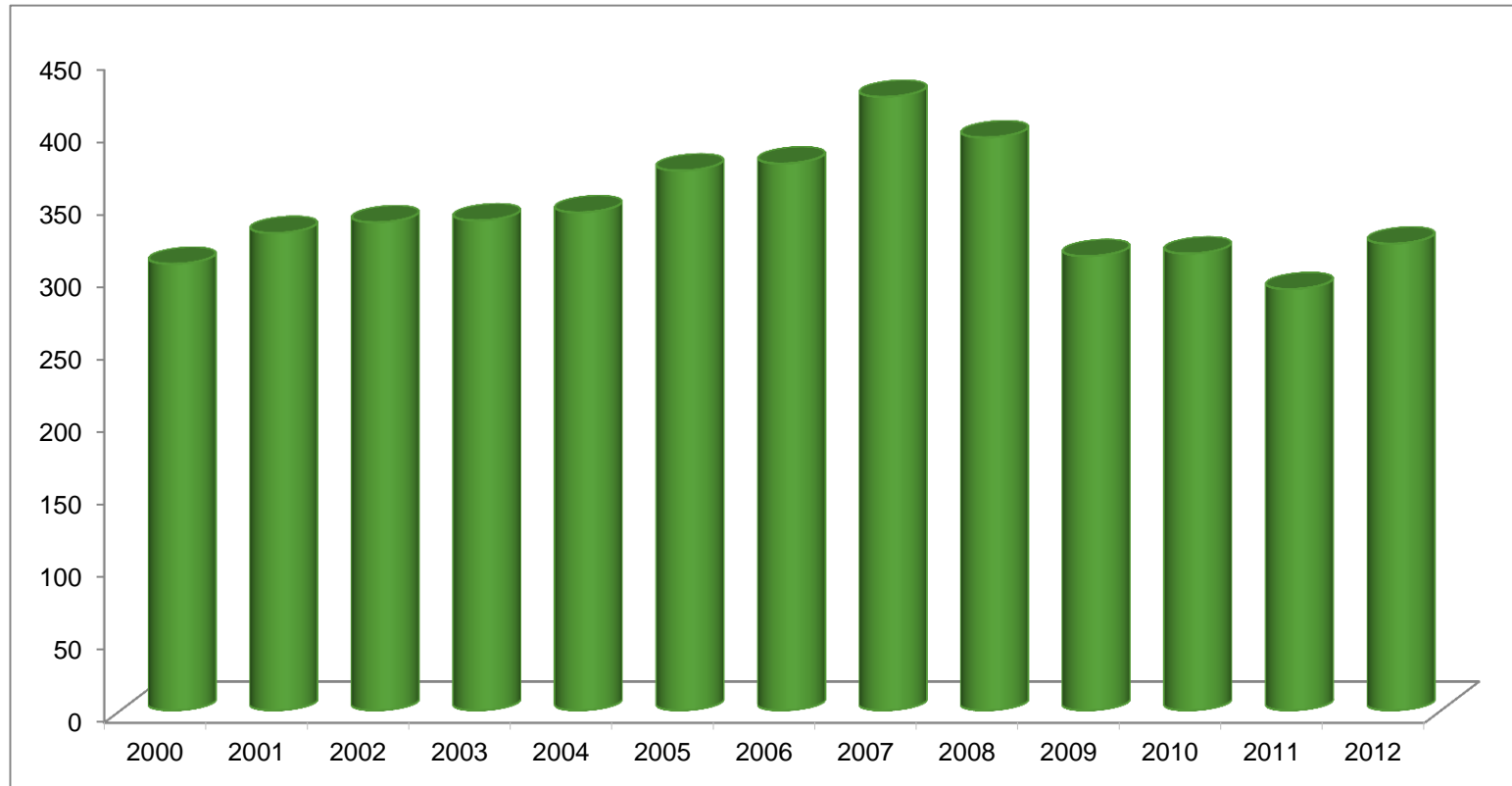
| | 2000 | 2001 | 2002 | 2003 | 2004 | 2005 | 2006 | 2007 | 2008 | 2009 | 2010 | 2011 | 2012 |
|-----------------|----------------|----------------|----------------|----------------|----------------|----------------|----------------|----------------|----------------|----------------|----------------|----------------|----------------|
| Internacionales | 1,153.5 | 1,460.4 | 1,424.4 | 1,667.0 | 1,890.9 | 2,212.3 | 1,989.9 | 1,942.6 | 2,174.0 | 1,424.5 | 1,334.6 | 1,483.5 | 1,713.6 |
| Nacionales | 1,655.40 | 1,979.60 | 1,997.9 | 1,859.0 | 2,097.5 | 2,333.1 | 2,161.6 | 2,363.7 | 2,269.8 | 1,713.2 | 2,107.2 | 2,378.1 | 2,212.5 |
| Total | 2,808.9 | 3,440.0 | 3,422.3 | 3,526.0 | 3,988.4 | 4,545.4 | 4,151.4 | 4,306.2 | 4,443.8 | 3,137.7 | 3,441.8 | 3,861.6 | 3,926.1 |

Cifras revisadas para el año 2011.

Fuente: Secretaría de Turismo del Gobierno del Distrito Federal con cifras del Banco de México.



Gráfica 2
Gasto promedio^{1/} por turista hospedado, 2000-2012
(dólares)



| 2000 | 2001 | 2002 | 2003 | 2004 | 2005 | 2006 | 2007 | 2008 | 2009 | 2010 | 2011 | 2012 |
|--------|--------|--------|--------|--------|--------|--------|--------|--------|--------|--------|--------|--------|
| 307.86 | 329.13 | 336.48 | 337.81 | 343.38 | 372.20 | 377.05 | 422.97 | 395.02 | 313.16 | 314.96 | 290.45 | 321.78 |

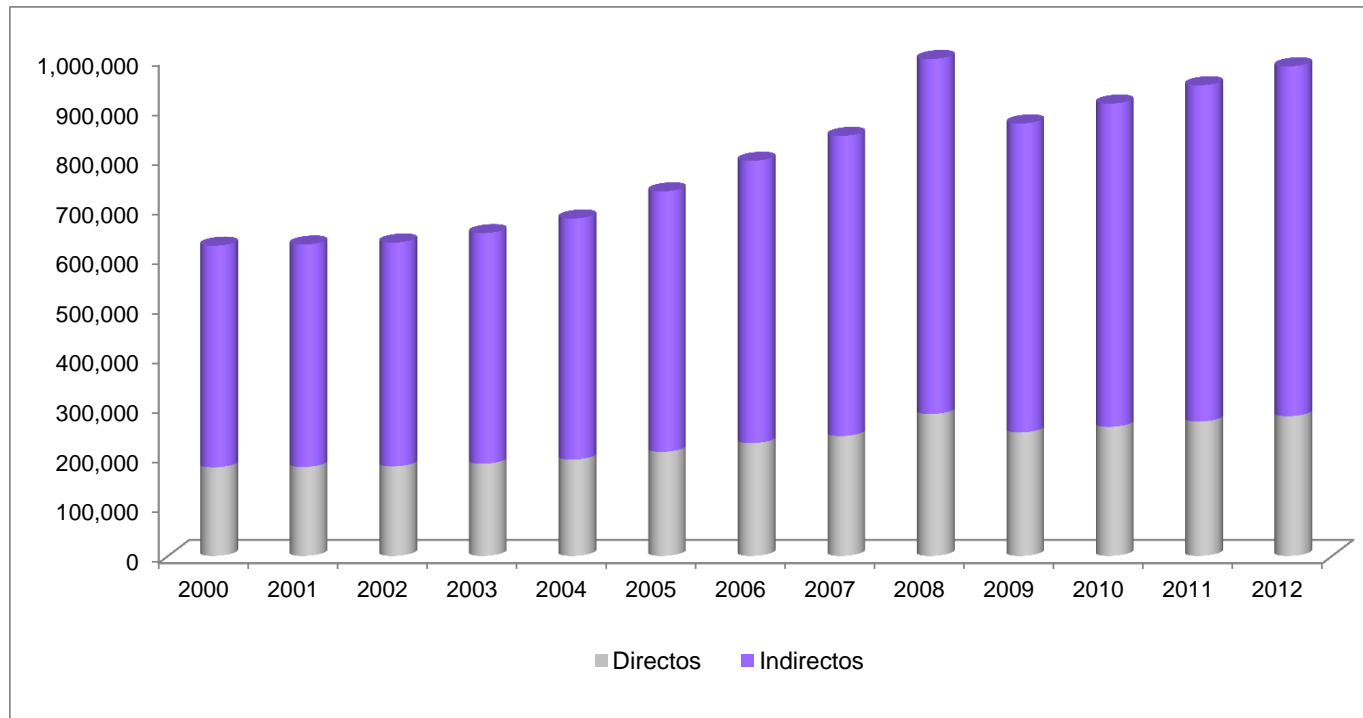
Nota:

^{1/} Se refiere a la erogación media realizado por turista en el mes de diciembre.

Fuente: Secretaría de Turismo del Gobierno del Distrito Federal con Datos del Banco de México.



Gráfica 3
Empleos^{1/} en restaurantes y hoteles, 2000-2012



| | 2000 | 2001 | 2002 | 2003 | 2004 | 2005 | 2006 | 2007 | 2008 | 2009 | 2010 | 2011 | 2012 |
|------------------------|----------------|----------------|----------------|----------------|----------------|----------------|----------------|----------------|----------------|----------------|----------------|----------------|----------------|
| Directos ^{2/} | 178,375 | 179,040 | 180,199 | 185,599 | 194,000 | 209,588 | 227,129 | 241,424 | 285,583 | 248,577 | 259,989 | 270,500 | 281,360 |
| Indirectos | 445,938 | 447,600 | 450,498 | 463,998 | 485,000 | 523,970 | 567,823 | 603,560 | 713,958 | 621,441 | 649,974 | 676,250 | 703,400 |
| Total | 624,313 | 626,640 | 630,697 | 649,597 | 679,000 | 733,558 | 794,952 | 844,984 | 999,541 | 870,018 | 909,963 | 946,750 | 984,760 |

Notas:

^{1/} Estas cifras, pueden no coincidir con las publicadas anteriormente, debido a un cambio metodológico aplicado por el Instituto Mexicano del Seguro Social.

^{2/} Los empleos directos están conformados por el personal ocupado en restaurantes y hoteles. Los datos de 2002 a 2009 se estimaron aplicando la tasa de crecimiento de asegurados permanentes en el IMSS del Sector "Servicios para personas y el Hogar" donde se incluye esta actividad, al Subsector 93 clasificado por el INEGI: "Restaurantes y Hoteles". A partir de 2010, se toman las cifras del IMSS.

Fuente: Secretaría de Turismo del Gobierno del Distrito Federal, con datos de INEGI e IMSS.



Cuadro 2
Turistas^{1/} hospedados en hoteles, 2000-2012

| Mes | 2000 | | 2001 | | 2002 | | 2003 | | 2004 | | 2005 | |
|--------------|------------------|------------------|------------------|------------------|------------------|------------------|------------------|------------------|------------------|------------------|------------------|------------------|
| | Nacionales | Internacionales | Nacionales | Internacionales | Nacionales | Internacionales | Nacionales | Internacionales | Nacionales | Internacionales | Nacionales | Internacionales |
| Enero | 603,984 | 161,675 | 669,469 | 208,157 | 629,324 | 203,325 | 527,380 | 164,395 | 651,876 | 219,070 | 654,696 | 250,904 |
| Febrero | 597,872 | 170,106 | 617,900 | 197,891 | 669,935 | 161,566 | 638,488 | 174,237 | 728,297 | 210,920 | 685,423 | 266,970 |
| Marzo | 647,535 | 180,860 | 682,964 | 218,331 | 732,375 | 201,853 | 610,269 | 213,040 | 720,478 | 214,469 | 711,061 | 213,457 |
| Abril | 619,084 | 171,102 | 649,829 | 204,503 | 723,179 | 212,143 | 590,243 | 177,571 | 711,669 | 206,767 | 740,644 | 255,885 |
| Mayo | 549,662 | 170,603 | 671,679 | 212,422 | 696,608 | 204,204 | 632,221 | 219,246 | 728,184 | 227,448 | 711,667 | 275,131 |
| Junio | 535,955 | 168,283 | 659,627 | 210,587 | 751,377 | 173,405 | 683,218 | 212,939 | 712,096 | 224,972 | 738,879 | 270,525 |
| Julio | 617,929 | 181,433 | 688,110 | 221,308 | 685,317 | 188,178 | 768,557 | 244,721 | 826,172 | 250,640 | 801,533 | 268,947 |
| Agosto | 623,995 | 185,767 | 683,990 | 219,850 | 646,883 | 199,989 | 645,816 | 222,514 | 752,554 | 247,909 | 832,947 | 275,882 |
| Septiembre | 556,141 | 174,554 | 643,997 | 198,674 | 671,360 | 173,661 | 667,884 | 214,529 | 771,706 | 224,693 | 804,114 | 272,344 |
| Octubre | 548,599 | 181,882 | 666,462 | 207,135 | 573,236 | 210,514 | 670,765 | 261,220 | 718,432 | 298,646 | 799,482 | 349,431 |
| Noviembre | 568,243 | 183,247 | 652,638 | 205,657 | 547,499 | 210,346 | 755,693 | 296,386 | 758,288 | 287,187 | 769,334 | 350,701 |
| Diciembre | 556,408 | 169,063 | 659,465 | 201,291 | 532,090 | 172,465 | 652,003 | 194,702 | 724,273 | 198,589 | 683,788 | 228,920 |
| Total | 7,025,407 | 2,098,575 | 7,946,130 | 2,505,806 | 7,859,183 | 2,311,649 | 7,842,537 | 2,595,500 | 8,804,025 | 2,811,310 | 8,933,568 | 3,279,097 |

| Mes | 2006 | | 2007 | | 2008 | | 2009 | | 2010 | | 2011 | |
|--------------|------------------|------------------|------------------|------------------|------------------|------------------|------------------|------------------|------------------|------------------|-------------------|------------------|
| | Nacionales | Internacionales | Nacionales | Internacionales | Nacionales | Internacionales | Nacionales | Internacionales | Nacionales | Internacionales | Nacionales | Internacionales |
| Enero | 590,791 | 225,935 | 657,842 | 240,016 | 706,648 | 201,758 | 672,143 | 162,987 | 719,079 | 138,254 | 619,757 | 132,111 |
| Febrero | 704,994 | 234,065 | 605,580 | 212,734 | 732,930 | 224,581 | 657,792 | 154,665 | 722,182 | 150,788 | 791,257 | 150,404 |
| Marzo | 726,964 | 262,931 | 646,702 | 239,388 | 724,348 | 196,191 | 708,917 | 187,781 | 710,778 | 166,300 | 927,929 | 200,044 |
| Abril | 630,208 | 197,841 | 581,363 | 182,397 | 767,417 | 275,809 | 665,390 | 179,087 | 750,275 | 152,028 | 817,139 | 162,190 |
| Mayo | 652,118 | 274,119 | 598,503 | 220,745 | 667,853 | 243,353 | 319,332 | 54,906 | 685,341 | 164,521 | 898,141 | 204,263 |
| Junio | 686,449 | 230,348 | 667,985 | 206,041 | 646,305 | 235,662 | 548,973 | 104,946 | 729,249 | 144,740 | 729,432 | 175,512 |
| Julio | 788,795 | 267,600 | 763,196 | 249,149 | 668,326 | 243,515 | 843,408 | 172,364 | 816,985 | 135,483 | 918,923 | 173,794 |
| Agosto | 770,665 | 262,783 | 865,096 | 309,181 | 839,153 | 331,089 | 740,237 | 237,972 | 839,307 | 140,682 | 900,958 | 143,844 |
| Septiembre | 709,697 | 204,958 | 710,405 | 211,601 | 721,386 | 235,739 | 578,039 | 204,453 | 758,282 | 190,344 | 865,636 | 170,309 |
| Octubre | 683,296 | 236,534 | 862,295 | 229,204 | 839,428 | 233,466 | 788,651 | 161,417 | 789,530 | 154,023 | 957,994 | 194,890 |
| Noviembre | 720,105 | 245,016 | 767,768 | 226,338 | 757,418 | 230,741 | 836,949 | 175,210 | 932,458 | 152,153 | 908,898 | 182,814 |
| Diciembre | 662,170 | 180,779 | 618,983 | 184,691 | 643,214 | 198,895 | 654,193 | 156,695 | 790,667 | 141,241 | 970,378 | 183,419 |
| Total | 8,326,252 | 2,822,909 | 8,345,718 | 2,711,485 | 8,714,426 | 2,850,799 | 8,014,024 | 1,952,483 | 9,244,133 | 1,830,557 | 10,306,442 | 2,073,594 |

| Mes | 2012 | |
|--------------|-------------------|------------------|
| | Nacionales | Internacionales |
| Enero | 707,701 | 127,961 |
| Febrero | 730,870 | 180,389 |
| Marzo | 857,077 | 218,108 |
| Abril | 785,805 | 218,248 |
| Mayo | 734,301 | 170,018 |
| Junio | 773,644 | 211,832 |
| Julio | 920,795 | 196,070 |
| Agosto | 966,184 | 185,546 |
| Septiembre | 951,529 | 214,272 |
| Octubre | 945,176 | 192,372 |
| Noviembre | 810,532 | 183,829 |
| Diciembre | 844,921 | 178,303 |
| Total | 10,028,535 | 2,276,948 |

^{1/} Visitante que permanece por lo menos una noche en un medio de alojamiento colectivo o privado en el lugar visitado.

Fuente: Secretaría de Turismo del Gobierno del Distrito Federal.



Cuadro 3
Turistas hospedados en hoteles por categoría, 2000-2012

| Categoría | 2000 | | 2001 | | 2002 | | 2003 | | 2004 | | 2005 | |
|----------------------------|------------------|------------------|------------------|------------------|------------------|------------------|------------------|------------------|------------------|------------------|------------------|------------------|
| | Nacionales | Internacionales | Nacionales | Internacionales | Nacionales | Internacionales | Nacionales | Internacionales | Nacionales | Internacionales | Nacionales | Internacionales |
| Gran Turismo ^{1/} | 1,090,321 | 966,067 | 1,232,605 | 1,096,649 | 511,916 | 461,592 | 760,309 | 569,016 | 779,680 | 536,947 | 567,753 | 817,683 |
| 5 Estrellas | | | | | 714,242 | 645,066 | 886,249 | 661,687 | 1,196,391 | 825,922 | 1,385,436 | 839,007 |
| 4 Estrellas | 829,532 | 483,509 | 1,294,864 | 732,524 | 1,098,998 | 590,590 | 1,378,124 | 695,079 | 1,576,042 | 720,367 | 1,748,000 | 786,395 |
| 3 Estrellas | 880,696 | 463,553 | 971,985 | 499,108 | 1,091,745 | 405,595 | 1,391,010 | 345,436 | 1,628,899 | 276,018 | 1,683,760 | 219,328 |
| 2 Estrellas | 1,358,433 | 159,318 | 1,184,155 | 129,781 | 1,268,154 | 171,706 | 1,279,289 | 262,272 | 1,538,377 | 327,952 | 1,431,290 | 386,104 |
| 1 Estrella | 2,866,431 | 26,134 | 3,262,521 | 47,744 | 1,689,786 | 23,204 | 1,279,366 | 37,760 | 1,251,789 | 74,062 | 1,123,416 | 118,412 |
| Sin Clasificar | | | | | 1,484,342 | 13,896 | 868,190 | 24,250 | 832,847 | 50,042 | 993,913 | 112,168 |
| Total | 7,025,413 | 2,098,581 | 7,946,130 | 2,505,806 | 7,859,183 | 2,311,649 | 7,842,537 | 2,595,500 | 8,804,025 | 2,811,310 | 8,933,568 | 3,279,097 |

| Categoría | 2006 | | 2007 | | 2008 | | 2009 | | 2010 | | 2011 | |
|----------------|------------------|------------------|------------------|------------------|------------------|------------------|------------------|------------------|------------------|------------------|-------------------|------------------|
| | Nacionales | Internacionales | Nacionales | Internacionales | Nacionales | Internacionales | Nacionales | Internacionales | Nacionales | Internacionales | Nacionales | Internacionales |
| Gran Turismo | 542,033 | 621,482 | 561,338 | 531,794 | 539,769 | 541,643 | 418,615 | 355,533 | 484,254 | 401,986 | 509,801 | 441,134 |
| 5 Estrellas | 1,467,889 | 799,407 | 1,359,575 | 639,496 | 1,389,535 | 686,071 | 1,169,370 | 578,968 | 1,419,495 | 528,083 | 1,609,031 | 521,547 |
| 4 Estrellas | 1,360,743 | 644,031 | 1,554,013 | 830,809 | 1,705,768 | 961,218 | 1,607,192 | 627,441 | 1,790,485 | 577,534 | 2,097,540 | 643,117 |
| 3 Estrellas | 1,604,259 | 225,854 | 1,678,534 | 248,685 | 1,686,734 | 260,845 | 1,473,514 | 140,774 | 1,783,524 | 175,835 | 2,112,879 | 254,495 |
| 2 Estrellas | 1,506,193 | 313,854 | 1,586,646 | 228,189 | 1,762,659 | 252,882 | 1,706,285 | 179,079 | 1,606,686 | 105,081 | 1,680,243 | 144,410 |
| 1 Estrella | 1,082,238 | 128,346 | 1,007,092 | 80,831 | 981,834 | 41,680 | 920,398 | 2,457 | 1,015,292 | 11,438 | 1,176,504 | 15,415 |
| Sin Clasificar | 762,897 | 89,935 | 598,520 | 151,681 | 648,127 | 106,460 | 718,650 | 68,231 | 1,144,397 | 30,600 | 1,120,444 | 53,476 |
| Total | 8,326,252 | 2,822,909 | 8,345,718 | 2,711,485 | 8,714,426 | 2,850,799 | 8,014,024 | 1,952,483 | 9,244,133 | 1,830,557 | 10,306,442 | 2,073,594 |

| Categoría | 2012 | |
|----------------|-------------------|------------------|
| | Nacionales | Internacionales |
| Gran Turismo | 655,911 | 500,895 |
| 5 Estrellas | 1,684,218 | 573,683 |
| 4 Estrellas | 2,249,378 | 714,525 |
| 3 Estrellas | 2,420,173 | 216,841 |
| 2 Estrellas | 1,540,939 | 158,554 |
| 1 Estrella | 1,111,582 | 32,758 |
| Sin Clasificar | 366,334 | 79,692 |
| Total | 10,028,535 | 2,276,948 |

Nota:

^{1/} Para 2000 y 2001, las cifras de gran turismo y cinco estrellas, se publicaron juntas.

Fuente: Secretaría de Turismo del Gobierno del Distrito Federal.



Cuadro 4
Porcentaje de ocupación por categoría, 2000-2012

| Categoría | 2000 | 2001 | 2002 | 2003 | 2004 | 2005 | 2006 | 2007 | 2008 | 2009 | 2010 | 2011 | 2012 |
|------------------------------|--------------|--------------|--------------|--------------|--------------|--------------|--------------|--------------|--------------|--------------|--------------|--------------|--------------|
| Gran Turismo | 66.27 | 63.16 | 61.79 | 64.37 | 60.72 | 62.94 | 63.55 | 62.70 | 62.76 | 45.59 | 57.49 | 64.14 | 65.75 |
| 5 Estrellas | 64.23 | 63.16 | 57.62 | 52.58 | 59.47 | 61.88 | 63.14 | 60.57 | 60.53 | 49.61 | 58.41 | 63.76 | 67.44 |
| 4 Estrellas | 60.12 | 59.61 | 53.26 | 53.12 | 56.83 | 59.44 | 51.00 | 58.89 | 60.24 | 49.11 | 55.38 | 60.53 | 67.43 |
| 3 Estrellas | 59.04 | 58.09 | 52.33 | 48.87 | 47.69 | 46.60 | 45.57 | 49.90 | 49.46 | 39.66 | 46.58 | 50.72 | 55.30 |
| 2 Estrellas | 63.03 | 61.37 | 50.53 | 49.47 | 55.50 | 56.35 | 60.11 | 58.66 | 60.05 | 52.50 | 53.61 | 58.01 | 60.24 |
| 1 Estrella | 56.75 | 56.43 | 60.07 | 47.39 | 48.13 | 44.39 | 46.62 | 47.90 | 42.98 | 37.17 | 44.24 | 45.88 | 53.94 |
| Sin Clasificar ^{1/} | | | 71.39 | 47.80 | 49.20 | 61.76 | 58.83 | 58.34 | 51.23 | 42.96 | 51.58 | 47.34 | 53.63 |
| Promedio | 61.57 | 59.66 | 56.56 | 51.82 | 54.12 | 55.70 | 54.67 | 56.45 | 55.84 | 45.60 | 52.28 | 56.88 | 62.25 |

Nota:

^{1/} Para 2000 y 2001 el porcentaje de ocupación de la Categoría sin Clasificar, se incluyó en una estrella

Fuente: Secretaría de Turismo del Gobierno del Distrito Federal.



Cuadro 5
Llegada de Turistas por Delegación^{1/}, 2001-2012

| Nombre | 2001 | 2002 | 2003 | 2004 | 2005 | 2006 | 2007 | 2008 | 2009 | 2010 | 2011 | 2012 |
|---------------------|-------------------|-------------------|-------------------|-------------------|-------------------|-------------------|-------------------|-------------------|------------------|-------------------|-------------------|-------------------|
| Alvaro Obregón | 46,872 | 62,127 | 89,886 | 96,437 | 101,763 | 135,696 | 152,646 | 159,481 | 129,834 | 141,152 | 154,310 | 336,105 |
| Azcapotzalco | 141,841 | 148,710 | 139,853 | 159,918 | 159,189 | 162,476 | 160,482 | 178,607 | 166,172 | 188,796 | 207,074 | 162,172 |
| Benito Juárez | 611,763 | 586,149 | 596,646 | 674,004 | 722,209 | 709,655 | 792,747 | 823,644 | 746,262 | 863,851 | 965,745 | 979,632 |
| Coyoacán | 122,293 | 167,793 | 197,340 | 232,936 | 247,977 | 231,645 | 222,112 | 235,799 | 204,365 | 219,166 | 242,824 | 229,358 |
| Cuajimalpa | 16,210 | 18,155 | 20,801 | 22,397 | 21,950 | 19,946 | 20,322 | 20,446 | 16,871 | 20,654 | 62,580 | 69,008 |
| Cuauhtémoc | 6,428,677 | 6,214,302 | 6,174,521 | 6,786,792 | 7,131,183 | 6,459,211 | 6,310,667 | 6,664,232 | 5,727,969 | 6,272,688 | 6,979,128 | 6,768,730 |
| Gustavo A. Madero | 485,469 | 446,848 | 443,153 | 479,940 | 475,292 | 447,833 | 449,135 | 463,245 | 412,741 | 477,747 | 559,275 | 566,620 |
| Iztacalco | 163,293 | 131,660 | 132,740 | 146,517 | 161,446 | 148,044 | 157,739 | 164,697 | 143,524 | 169,393 | 189,735 | 181,942 |
| Iztapalapa | 339,480 | 298,393 | 301,069 | 338,976 | 354,987 | 309,461 | 331,225 | 343,237 | 316,454 | 345,392 | 412,528 | 353,995 |
| Magdalena Contreras | 13,390 | 12,458 | 13,802 | 16,660 | 18,041 | 57,444 | 65,307 | 67,156 | 57,053 | 63,120 | 68,980 | 69,677 |
| Miguel Hidalgo | 1,180,615 | 1,207,959 | 1,376,653 | 1,570,915 | 1,659,646 | 1,421,183 | 1,372,212 | 1,402,780 | 1,151,076 | 1,309,460 | 1,416,002 | 1,416,562 |
| Tláhuac | 17,214 | 14,530 | 17,844 | 20,997 | 22,824 | 17,990 | 20,966 | 23,586 | 19,687 | 20,616 | 23,383 | 23,166 |
| Tlalpan | 229,858 | 221,594 | 263,172 | 285,790 | 304,213 | 279,503 | 267,213 | 271,608 | 219,536 | 255,437 | 294,320 | 301,104 |
| Venustiano Carranza | 605,264 | 581,659 | 597,204 | 683,996 | 724,260 | 657,031 | 635,788 | 640,701 | 560,091 | 616,549 | 681,816 | 751,065 |
| Xochimilco | 49,697 | 58,495 | 73,353 | 99,060 | 107,685 | 92,043 | 98,642 | 106,006 | 94,872 | 110,669 | 122,336 | 96,347 |
| Total | 10,451,936 | 10,170,832 | 10,438,037 | 11,615,335 | 12,212,665 | 11,149,161 | 11,057,203 | 11,565,225 | 9,966,507 | 11,074,690 | 12,380,036 | 12,305,483 |

Nota:

^{1/}Estimación con base en la composición de hoteles por categoría en cada Delegación.

Fuente: Secretaría de Turismo del Gobierno del Distrito Federal.



Cuadro 6
Porcentaje de Ocupación por Delegación^{1/}, 2001-2012

| Nombre | 2001 | 2002 | 2003 | 2004 | 2005 | 2006 | 2007 | 2008 | 2009 | 2010 | 2011 | 2012 |
|-----------------------|--------------|--------------|--------------|--------------|--------------|--------------|--------------|--------------|--------------|--------------|--------------|--------------|
| Alvaro Obregón | 62.94 | 58.25 | 58.75 | 58.78 | 61.04 | 58.96 | 60.73 | 61.51 | 48.45 | 57.25 | 62.89 | 67.46 |
| Azcapotzalco | 58.87 | 55.80 | 49.37 | 52.88 | 53.06 | 53.25 | 54.55 | 54.62 | 45.29 | 50.05 | 53.05 | 58.47 |
| Benito Juárez | 58.70 | 56.52 | 50.59 | 53.44 | 55.48 | 54.07 | 56.55 | 56.09 | 46.10 | 53.13 | 57.56 | 63.40 |
| Coyoacán | 60.46 | 54.90 | 51.69 | 56.88 | 58.71 | 55.39 | 58.71 | 59.71 | 48.78 | 55.61 | 60.44 | 64.69 |
| Cuajimalpa | 58.09 | 52.10 | 48.86 | 47.66 | 46.55 | 50.21 | 49.90 | 55.35 | 39.66 | 46.61 | 58.71 | 63.88 |
| Cuauhtémoc | 59.46 | 56.17 | 51.21 | 53.73 | 55.25 | 54.32 | 55.95 | 55.18 | 45.46 | 51.62 | 56.14 | 61.67 |
| Gustavo A. Madero | 58.47 | 54.81 | 48.85 | 49.43 | 48.73 | 51.37 | 51.91 | 50.90 | 41.89 | 47.74 | 51.61 | 56.14 |
| Iztacalco | 58.11 | 55.98 | 50.21 | 51.63 | 54.65 | 53.45 | 55.86 | 56.02 | 44.79 | 51.65 | 55.23 | 60.48 |
| Iztapalapa | 58.79 | 55.46 | 50.61 | 52.90 | 54.23 | 53.63 | 55.40 | 55.40 | 45.29 | 51.38 | 56.47 | 61.19 |
| Magdalena Contreras | 63.17 | 57.60 | 52.59 | 59.57 | 61.85 | 58.90 | 60.56 | 62.75 | 49.61 | 58.41 | 63.76 | 67.36 |
| Miguel Hidalgo | 61.14 | 58.90 | 56.91 | 57.12 | 59.18 | 57.68 | 59.30 | 58.20 | 46.01 | 54.82 | 60.05 | 64.03 |
| Tláhuac | 59.62 | 53.25 | 53.12 | 56.83 | 59.44 | 56.21 | 58.90 | 67.66 | 49.11 | 55.38 | 60.48 | 66.88 |
| Tlalpan | 61.01 | 57.08 | 54.50 | 55.57 | 57.26 | 56.19 | 56.80 | 57.17 | 45.08 | 53.55 | 58.72 | 62.80 |
| Venustiano Carranza | 60.95 | 56.85 | 50.59 | 55.13 | 57.10 | 55.26 | 57.21 | 56.54 | 46.90 | 53.20 | 57.55 | 63.86 |
| Xochimilco | 58.90 | 57.55 | 51.05 | 53.10 | 56.31 | 54.23 | 56.58 | 57.60 | 46.20 | 52.37 | 55.53 | 62.02 |
| Promedio anual | 59.66 | 56.56 | 51.82 | 54.12 | 55.70 | 54.67 | 56.45 | 55.84 | 45.60 | 52.28 | 56.88 | 62.25 |

Nota:

^{1/}Estimación con base en la composición de hoteles por categoría en cada Delegación.

Fuente: Secretaría de Turismo del Gobierno del Distrito Federal.



Cuadro 7

Llegada de turistas a hoteles por Zona Turística¹, 2001-2012

| Nombre | 2001 | 2002 | 2003 | 2004 | 2005 | 2006 | 2007 | 2008 | 2009 | 2010 | 2011 | 2012 |
|---------------------------------|-------------------|-------------------|-------------------|-------------------|-------------------|-------------------|-------------------|-------------------|------------------|-------------------|-------------------|-------------------|
| Aeropuerto-Foro Sol | 778,028 | 749,759 | 738,833 | 839,212 | 892,400 | 821,298 | 787,985 | 826,509 | 723,232 | 803,800 | 894,552 | 962,654 |
| Centro Histórico-Alameda | 2,218,825 | 2,213,618 | 2,164,445 | 2,371,395 | 2,441,636 | 2,182,293 | 2,161,686 | 2,251,333 | 1,988,061 | 2,136,892 | 2,368,729 | 2,230,887 |
| Chapultepec-Polanco | 780,268 | 790,996 | 962,892 | 1,058,748 | 1,121,776 | 927,777 | 897,293 | 928,127 | 718,330 | 808,319 | 860,297 | 921,006 |
| Condesa-Roma | 346,878 | 282,363 | 329,418 | 373,756 | 426,555 | 375,766 | 370,746 | 396,530 | 348,609 | 396,852 | 448,030 | 434,210 |
| Coyoacán | 27,051 | 22,832 | 28,045 | 32,999 | 35,866 | 30,754 | 30,142 | 30,999 | 28,051 | 32,664 | 35,696 | 36,059 |
| Iztapalapa-Central de Abasto | 322,568 | 299,363 | 302,450 | 338,976 | 354,987 | 309,461 | 322,720 | 343,237 | 316,454 | 345,392 | 412,528 | 353,995 |
| Norte-Basílica de Guadalupe | 1,539,105 | 1,495,081 | 1,412,517 | 1,552,415 | 1,574,154 | 1,465,627 | 1,443,208 | 1,490,302 | 1,347,431 | 1,534,480 | 1,712,459 | 1,569,906 |
| Perisur-Ajusco | 229,858 | 221,594 | 276,974 | 302,450 | 316,949 | 368,874 | 383,986 | 340,912 | 266,084 | 305,700 | 347,531 | 363,861 |
| Santa Fe-Desierto de los Leones | 76,472 | 92,740 | 110,687 | 118,834 | 123,713 | 101,508 | 104,468 | 165,043 | 146,705 | 161,806 | 216,890 | 404,478 |
| Tlalpan-Taxqueña | 1,280,522 | 1,309,920 | 1,208,903 | 1,336,541 | 1,403,864 | 1,312,607 | 1,299,127 | 1,344,675 | 1,188,283 | 1,314,413 | 1,454,247 | 1,330,852 |
| Torre Mayor-Zona Rosa | 2,295,674 | 2,134,087 | 2,328,665 | 2,572,355 | 2,758,273 | 2,548,475 | 2,490,786 | 2,630,095 | 2,143,155 | 2,362,953 | 2,663,435 | 2,734,419 |
| W.T.C.-San Ángel-C.U. | 489,776 | 485,454 | 484,392 | 597,597 | 631,983 | 594,688 | 645,448 | 687,871 | 637,553 | 740,134 | 819,923 | 843,643 |
| Xochimilco-Milpa Alta-Tláhuac | 66,911 | 73,025 | 89,816 | 120,057 | 130,509 | 110,033 | 119,608 | 129,592 | 114,559 | 131,285 | 145,719 | 119,513 |
| Total | 10,451,936 | 10,170,832 | 10,438,037 | 11,615,335 | 12,212,665 | 11,149,161 | 11,057,203 | 11,565,225 | 9,966,507 | 11,074,690 | 12,380,036 | 12,305,483 |

Nota:

¹ Estimación con base en la composición de hoteles por categorías en cada zona turística.

Fuente: Secretaría de Turismo del Gobierno del Distrito Federal



Cuadro 8
Porcentaje de ocupación por Zona Turística^{1/}, 2001-2012

| Nombre | 2001 | 2002 | 2003 | 2004 | 2005 | 2006 | 2007 | 2008 | 2009 | 2010 | 2011 | 2012 |
|---------------------------------|--------------|--------------|--------------|--------------|--------------|--------------|--------------|--------------|--------------|--------------|--------------|--------------|
| Aeropuerto-Foro Sol | 60.29 | 56.81 | 50.49 | 54.27 | 56.30 | 54.71 | 56.51 | 55.88 | 46.39 | 52.63 | 56.82 | 62.94 |
| Centro Histórico-Alameda | 58.78 | 55.56 | 50.31 | 52.50 | 53.64 | 50.35 | 54.86 | 53.71 | 44.81 | 50.09 | 54.33 | 59.81 |
| Chapultepec-Polanco | 62.16 | 54.41 | 51.03 | 53.13 | 55.36 | 51.59 | 55.82 | 55.63 | 46.52 | 56.53 | 62.45 | 65.44 |
| Condesa-Roma | 59.24 | 53.25 | 53.13 | 56.83 | 59.43 | 54.11 | 60.56 | 60.57 | 45.66 | 52.05 | 56.20 | 61.66 |
| Coyoacán | 59.61 | 59.97 | 60.35 | 59.18 | 61.51 | 62.60 | 61.18 | 59.94 | 49.85 | 58.41 | 63.75 | 67.36 |
| Iztapalapa-Central de Abasto | 58.90 | 55.50 | 50.59 | 52.90 | 54.23 | 49.92 | 55.29 | 54.96 | 45.29 | 51.38 | 56.47 | 61.19 |
| Norte-Basílica de Guadalupe | 58.65 | 55.83 | 49.12 | 51.01 | 51.22 | 47.77 | 53.37 | 51.86 | 43.31 | 48.73 | 52.47 | 57.69 |
| Perisur-Ajusco | 61.01 | 57.08 | 54.40 | 55.78 | 57.69 | 58.92 | 58.45 | 57.75 | 46.22 | 54.79 | 60.03 | 63.81 |
| Santa Fe-Desierto de los Leones | 61.77 | 56.80 | 56.54 | 56.30 | 57.81 | 55.87 | 58.43 | 59.24 | 47.25 | 55.80 | 61.69 | 66.89 |
| Tlalpan-Taxqueña | 58.49 | 56.42 | 49.70 | 52.20 | 53.41 | 49.29 | 54.23 | 53.01 | 44.05 | 49.72 | 53.81 | 59.61 |
| Torre Mayor-Zona Rosa | 60.86 | 56.40 | 53.28 | 56.61 | 58.72 | 57.92 | 58.59 | 58.40 | 47.36 | 54.90 | 59.93 | 64.78 |
| W.T.C.-San Ángel-C.U. | 58.42 | 58.24 | 50.74 | 53.93 | 56.70 | 53.28 | 56.98 | 56.59 | 46.57 | 53.70 | 58.13 | 64.18 |
| Xochimilco-Milpa Alta-Tláhuac | 59.10 | 56.46 | 51.55 | 53.74 | 56.85 | 51.55 | 56.98 | 56.78 | 46.70 | 52.89 | 56.38 | 62.97 |
| Promedio | 59.66 | 56.56 | 51.82 | 54.12 | 55.70 | 54.67 | 56.45 | 55.84 | 45.60 | 52.28 | 56.88 | 62.25 |

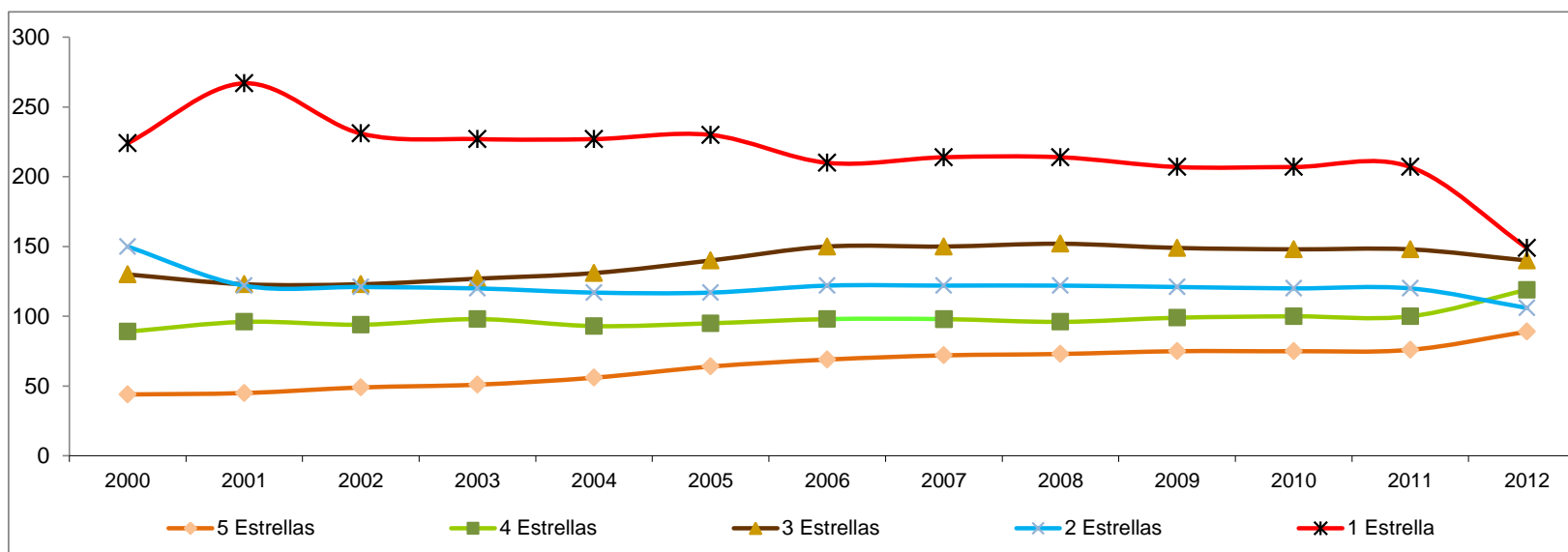
Nota:

^{1/} Estimación con base en la composición de hoteles por categorías en cada zona turística.

Fuente: Secretaría de Turismo del Gobierno del Distrito Federal.



Gráfica 4
Establecimientos^{1/} de hospedaje por categoría, 2000-2012



| | 2000 | 2001 | 2002 | 2003 | 2004 | 2005 | 2006 | 2007 | 2008 | 2009 | 2010 | 2011 | 2012 |
|---------------------------|------------|------------|------------|------------|------------|------------|------------|------------|------------|------------|------------|------------|------------|
| 5 Estrellas ^{2/} | 44 | 45 | 49 | 51 | 56 | 64 | 69 | 72 | 73 | 75 | 75 | 76 | 89 |
| 4 Estrellas | 89 | 96 | 94 | 98 | 93 | 95 | 98 | 98 | 96 | 99 | 100 | 100 | 119 |
| 3 Estrellas | 130 | 123 | 123 | 127 | 131 | 140 | 150 | 150 | 152 | 149 | 148 | 148 | 140 |
| 2 Estrellas | 150 | 122 | 121 | 120 | 117 | 117 | 122 | 122 | 122 | 121 | 120 | 120 | 106 |
| 1 Estrella ^{3/} | 224 | 267 | 231 | 227 | 227 | 230 | 210 | 214 | 214 | 207 | 207 | 207 | 149 |
| Total | 637 | 653 | 618 | 623 | 624 | 646 | 649 | 656 | 657 | 651 | 650 | 651 | 603 |

Notas:

^{1/} Oferta al final de cada periodo.

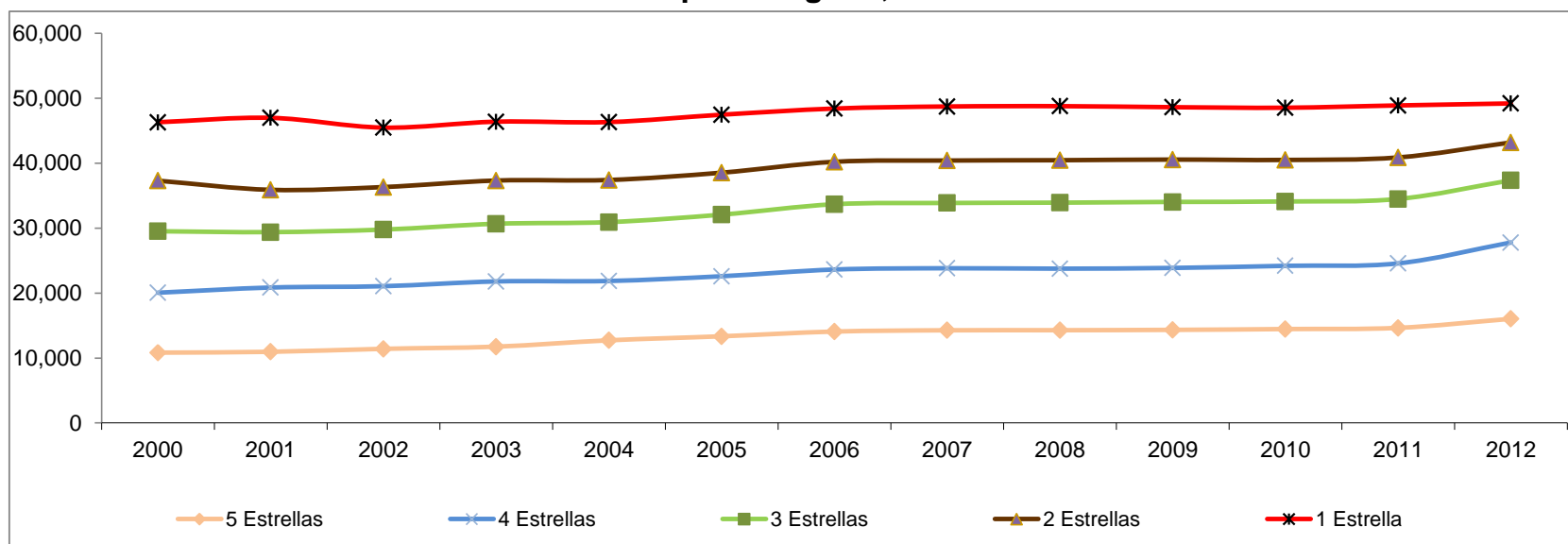
^{2/} Incluye hoteles de Gran Turismo

^{3/} Incluye a hoteles Sin Clasificar

Fuente: Secretaría de Turismo del Gobierno del Distrito Federal.



Gráfica 5
Cuartos^{1/} por categoría, 2000-2012



| | 2000 | 2001 | 2002 | 2003 | 2004 | 2005 | 2006 | 2007 | 2008 | 2009 | 2010 | 2011 | 2012 |
|---------------------------|---------------|---------------|---------------|---------------|---------------|---------------|---------------|---------------|---------------|---------------|---------------|---------------|---------------|
| 5 Estrellas ^{2/} | 10,832 | 10,961 | 11,418 | 11,752 | 12,726 | 13,347 | 14,077 | 14,270 | 14,282 | 14,336 | 14,459 | 14,643 | 16,036 |
| 4 Estrellas | 9,222 | 9,893 | 9,641 | 10,042 | 9,138 | 9,244 | 9,549 | 9,550 | 9,478 | 9,535 | 9,736 | 9,930 | 11,755 |
| 3 Estrellas | 9,464 | 8,530 | 8,713 | 8,877 | 9,061 | 9,483 | 10,051 | 10,051 | 10,161 | 10,161 | 9,909 | 9,915 | 9,569 |
| 2 Estrellas | 7,785 | 6,511 | 6,550 | 6,656 | 6,487 | 6,461 | 6,535 | 6,535 | 6,535 | 6,521 | 6,394 | 6,393 | 5,829 |
| 1 Estrella ^{3/} | 8,999 | 11,083 | 9,151 | 9,059 | 8,914 | 8,927 | 8,197 | 8,318 | 8,320 | 8,065 | 8,036 | 8,007 | 6,005 |
| Total | 46,302 | 46,978 | 45,473 | 46,386 | 46,326 | 47,462 | 48,409 | 48,724 | 48,776 | 48,618 | 48,534 | 48,888 | 49,194 |

Notas:

^{1/} Oferta al final de cada periodo.

^{2/} Incluye hoteles de Gran Turismo

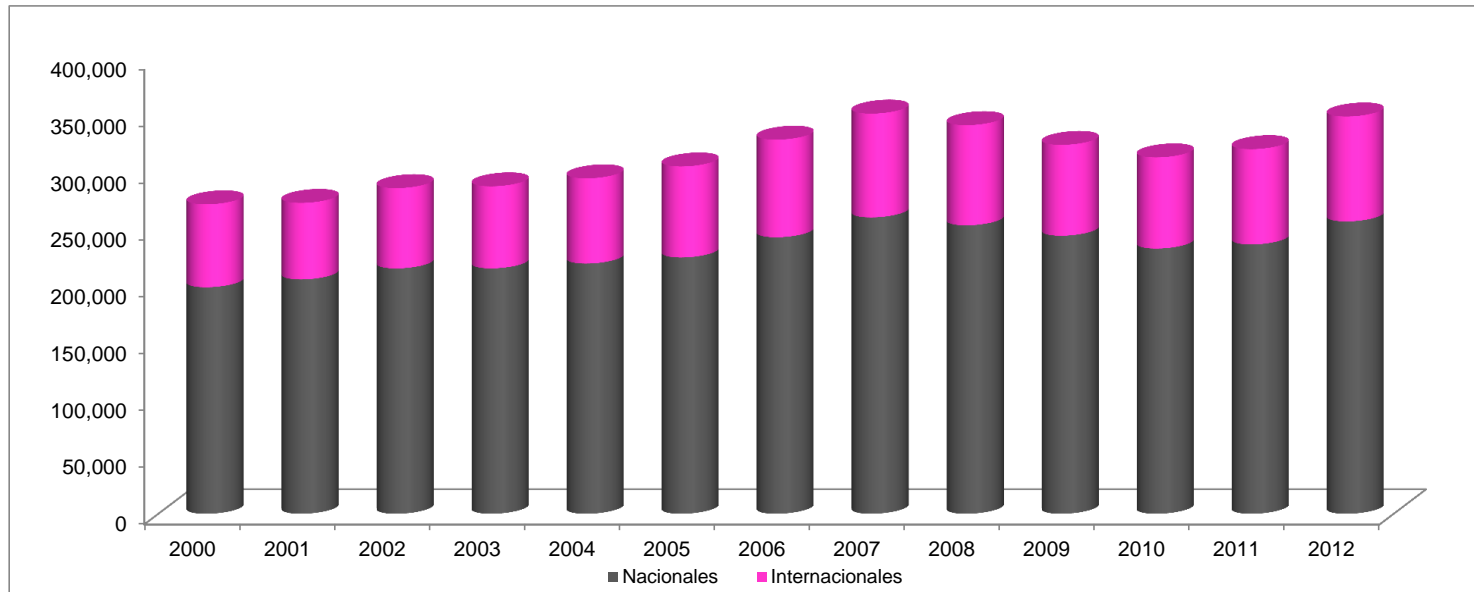
^{3/} Incluye a hoteles Sin Clasificar

Fuente: Secretaría de Turismo del Gobierno del Distrito Federal.



Gráfica 6

Vuelos comerciales^{1/} en el Aeropuerto Internacional de la Ciudad de México, 2000-2012



| | 2000 | 2001 | 2002 | 2003 | 2004 | 2005 | 2006 | 2007 | 2008 | 2009 | 2010 | 2011 | 2012 |
|-----------------|----------------|----------------|----------------|----------------|----------------|----------------|----------------|----------------|----------------|----------------|----------------|----------------|----------------|
| Nacionales | 199,633 | 206,559 | 216,175 | 216,233 | 220,502 | 225,862 | 243,608 | 261,089 | 254,087 | 244,985 | 233,689 | 237,314 | 257,507 |
| Internacionales | 73,022 | 67,307 | 70,660 | 72,203 | 74,957 | 80,070 | 85,864 | 91,314 | 88,152 | 79,902 | 80,234 | 83,822 | 92,370 |
| Total | 272,655 | 273,866 | 286,835 | 287,542 | 295,459 | 305,932 | 329,472 | 352,403 | 342,239 | 324,887 | 313,923 | 321,136 | 349,877 |

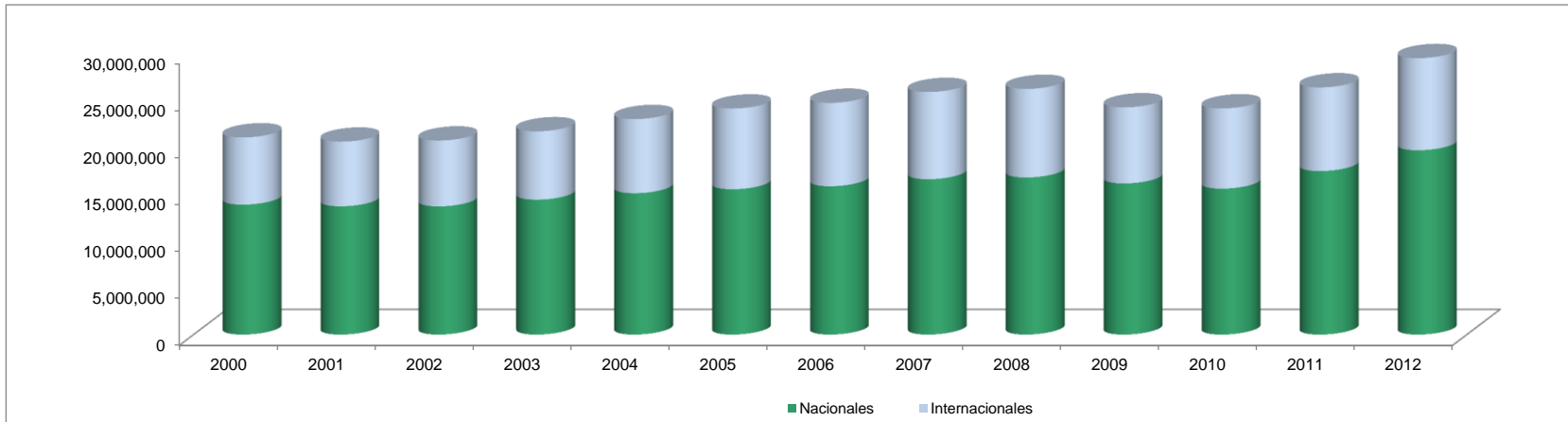
Nota:

^{1/} Incluyen llegadas y salidas.

Fuente: Secretaría de Turismo del Gobierno del Distrito Federal con datos del Aeropuerto de la Ciudad de México.



Gráfica 7
Movimiento de Pasajeros^{1/} en el Aeropuerto Internacional de la Ciudad de México, 2000-2012



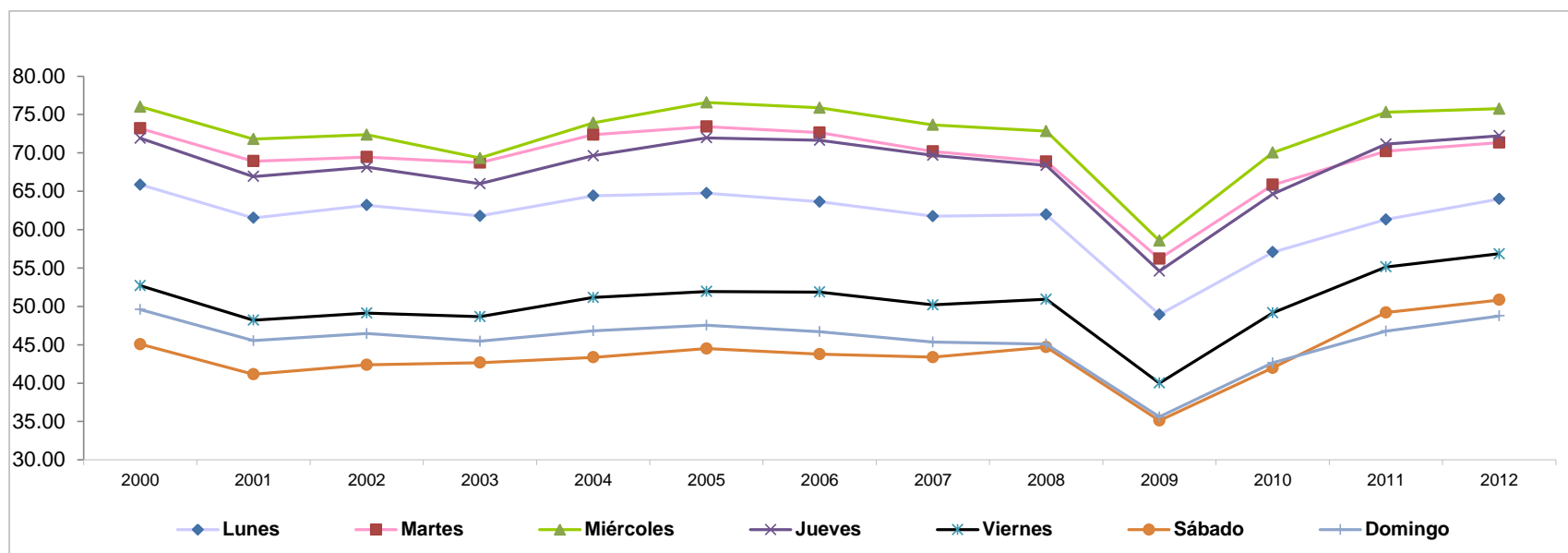
| | 2000 | 2001 | 2002 | 2003 | 2004 | 2005 | 2006 | 2007 | 2008 | 2009 | 2010 | 2011 | 2012 |
|-----------------|-------------------|-------------------|-------------------|-------------------|-------------------|-------------------|-------------------|-------------------|-------------------|-------------------|-------------------|-------------------|-------------------|
| Nacionales | 13,878,558 | 13,701,145 | 13,690,669 | 14,406,345 | 15,099,355 | 15,523,755 | 15,848,060 | 16,592,422 | 16,777,772 | 16,142,330 | 15,587,068 | 17,461,438 | 19,678,117 |
| Internacionales | 7,164,053 | 6,887,934 | 7,018,488 | 7,287,250 | 7,894,688 | 8,591,797 | 8,879,236 | 9,289,240 | 9,432,444 | 8,100,726 | 8,543,467 | 8,906,830 | 9,813,436 |
| Total | 21,042,611 | 20,589,079 | 20,709,157 | 21,693,595 | 22,994,043 | 24,115,552 | 24,727,296 | 25,881,662 | 26,210,216 | 24,243,056 | 24,130,535 | 26,368,268 | 29,491,553 |

Nota:
^{1/}Incluyen llegadas y salidas.

Fuente: Secretaría de Turismo del Gobierno del Distrito Federal con datos del Aeropuerto de la Ciudad de México.



Gráfica 8
Porcentaje de ocupación promedio diaria, 2000-2012



| | 2000 | 2001 | 2002 | 2003 | 2004 | 2005 | 2006 | 2007 | 2008 | 2009 | 2010 | 2011 ^{1/} | 2012 ^{2/} |
|-----------|-------|-------|-------|-------|-------|-------|-------|-------|-------|-------|-------|--------------------|--------------------|
| Lunes | 65.86 | 61.53 | 63.19 | 61.79 | 64.42 | 64.75 | 63.65 | 61.74 | 61.96 | 48.93 | 57.07 | 61.33 | 63.99 |
| Martes | 73.20 | 68.92 | 69.45 | 68.74 | 72.38 | 73.42 | 72.63 | 70.18 | 68.86 | 56.22 | 65.84 | 70.22 | 71.34 |
| Miércoles | 76.03 | 71.82 | 72.38 | 69.34 | 73.93 | 76.56 | 75.90 | 73.66 | 72.84 | 58.56 | 70.04 | 75.30 | 75.76 |
| Jueves | 71.92 | 66.93 | 68.15 | 65.98 | 69.63 | 71.96 | 71.65 | 69.70 | 68.37 | 54.59 | 64.65 | 71.13 | 72.24 |
| Viernes | 52.71 | 48.21 | 49.12 | 48.66 | 51.15 | 51.95 | 51.87 | 50.19 | 50.93 | 40.01 | 49.15 | 55.15 | 56.86 |
| Sábado | 45.07 | 41.16 | 42.38 | 42.67 | 43.37 | 44.50 | 43.78 | 43.38 | 44.70 | 35.12 | 41.99 | 49.20 | 50.83 |
| Domingo | 49.59 | 45.53 | 46.46 | 45.46 | 46.82 | 47.53 | 46.71 | 45.35 | 45.08 | 35.60 | 42.64 | 46.77 | 48.75 |

Nota:

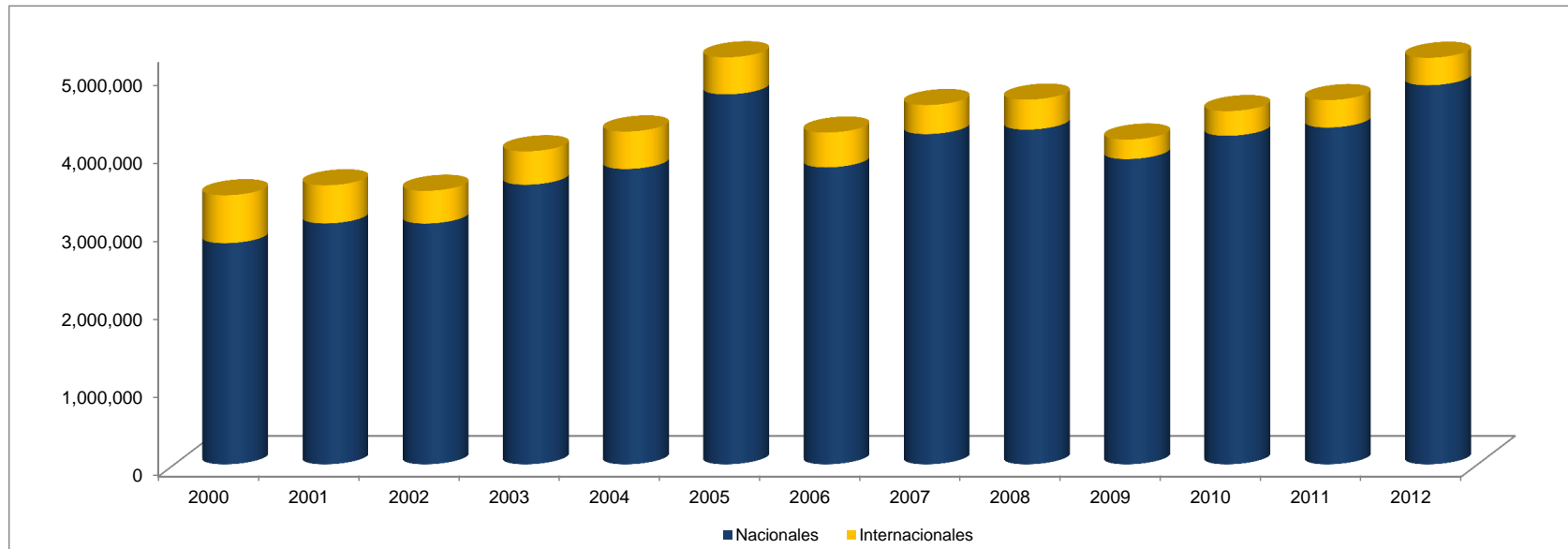
^{1/} Grupo de control compuesto de 48 hoteles.

^{2/} Grupo de control compuesto de 57 hoteles.

Fuente: Secretaría de Turismo del Gobierno del Distrito Federal.



Gráfica 9
Visitantes a centros del INAH, 2000-2012

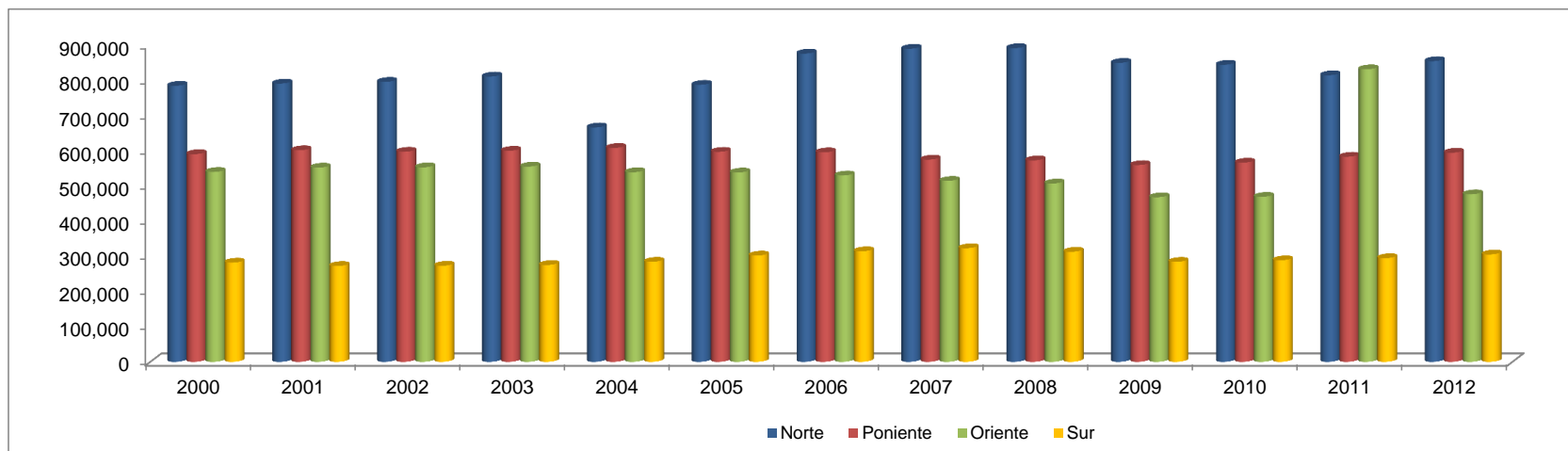


| | 2000 | 2001 | 2002 | 2003 | 2004 | 2005 | 2006 | 2007 | 2008 | 2009 | 2010 | 2011 | 2012 |
|-----------------|------------------|------------------|------------------|------------------|------------------|------------------|------------------|------------------|------------------|------------------|------------------|------------------|------------------|
| Nacionales | 2,833,187 | 3,085,941 | 3,084,768 | 3,581,074 | 3,782,385 | 4,736,302 | 3,802,426 | 4,228,873 | 4,285,798 | 3,909,002 | 4,206,613 | 4,312,500 | 4,852,951 |
| Internacionales | 613,428 | 487,637 | 418,488 | 427,141 | 479,501 | 474,601 | 445,456 | 371,280 | 383,378 | 250,161 | 316,008 | 350,526 | 351,421 |
| Total | 3,446,615 | 3,573,578 | 3,503,256 | 4,008,215 | 4,261,886 | 5,210,903 | 4,247,882 | 4,600,153 | 4,669,176 | 4,159,163 | 4,522,621 | 4,663,026 | 5,204,372 |

Fuente: Secretaría de Turismo del Gobierno del Distrito Federal con datos del Instituto Nacional de Antropología e Historia (INAH).



Gráfica 10
Corridos de origen por Centrales de Autobuses, 2000-2012

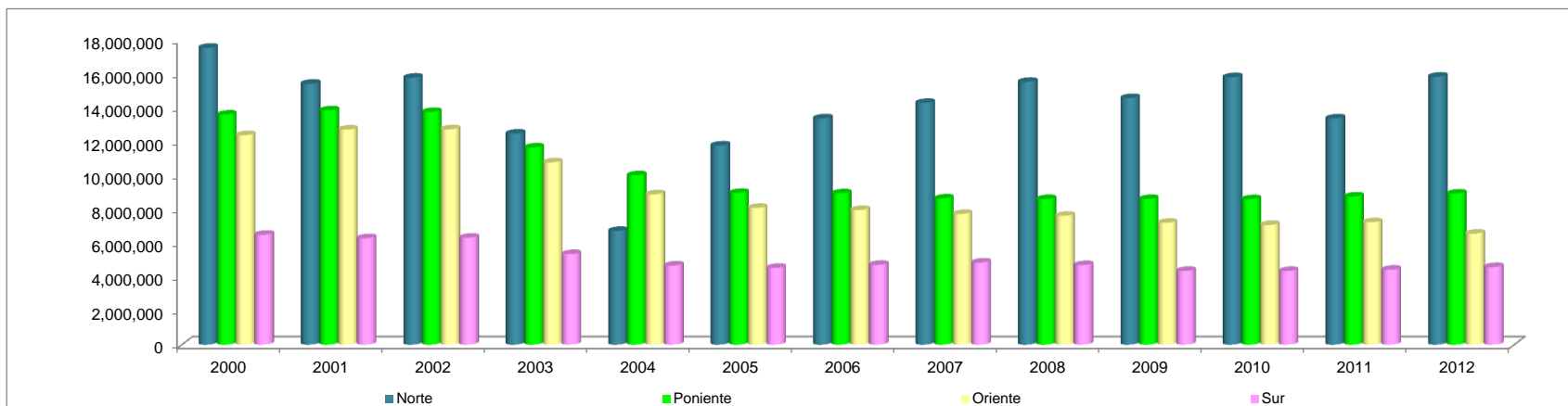


| Central | 2000 | 2001 | 2002 | 2003 | 2004 | 2005 | 2006 | 2007 | 2008 | 2009 | 2010 | 2011 | 2012 |
|--------------|------------------|------------------|------------------|------------------|------------------|------------------|------------------|------------------|------------------|------------------|------------------|------------------|------------------|
| Norte | 784,874 | 791,198 | 796,008 | 811,152 | 666,404 | 787,568 | 876,401 | 890,243 | 891,961 | 850,073 | 844,618 | 814,791 | 854,882 |
| Poniente | 590,547 | 601,541 | 597,309 | 600,039 | 608,110 | 597,094 | 595,621 | 575,012 | 572,833 | 559,411 | 566,316 | 583,160 | 594,599 |
| Oriente | 539,917 | 552,135 | 552,968 | 554,989 | 539,071 | 538,262 | 529,847 | 514,397 | 507,024 | 467,922 | 469,060 | 831,683 | 476,338 |
| Sur | 282,085 | 272,419 | 273,106 | 275,433 | 284,374 | 302,160 | 314,316 | 323,147 | 312,962 | 284,203 | 288,665 | 294,802 | 305,348 |
| Total | 2,197,423 | 2,217,293 | 2,219,391 | 2,241,613 | 2,097,959 | 2,225,084 | 2,316,185 | 2,302,799 | 2,284,780 | 2,161,609 | 2,168,660 | 2,524,436 | 2,231,167 |

Fuente: Secretaría de Turismo del Gobierno del Distrito Federal con datos de la Secretaría de Comunicaciones y Transportes.



Gráfica 11
Pasajeros transportados por Centrales de Autobuses, 2000-2012



| Central | 2000 | 2001 | 2002 | 2003 | 2004 | 2005 | 2006 | 2007 | 2008 | 2009 | 2010 | 2011 | 2012 |
|--------------|-------------------|-------------------|-------------------|-------------------|-------------------|-------------------|-------------------|-------------------|-------------------|-------------------|-------------------|-------------------|-------------------|
| Norte | 17,530,055 | 15,409,146 | 15,762,373 | 12,463,064 | 6,712,039 | 11,759,910 | 13,361,684 | 14,272,397 | 15,518,863 | 14,558,471 | 15,794,448 | 13,353,376 | 15,823,646 |
| Poniente | 13,582,753 | 13,835,443 | 13,738,107 | 11,640,757 | 9,996,846 | 8,956,410 | 8,934,315 | 8,625,180 | 8,592,495 | 8,595,869 | 8,584,089 | 8,747,400 | 8,918,985 |
| Oriente | 12,367,911 | 12,699,105 | 12,718,264 | 10,766,788 | 8,875,082 | 8,073,930 | 7,947,705 | 7,715,955 | 7,605,360 | 7,194,648 | 7,071,070 | 7,225,245 | 6,553,290 |
| Sur | 6,487,955 | 6,283,637 | 6,309,551 | 5,343,400 | 4,669,601 | 4,532,400 | 4,714,740 | 4,847,205 | 4,694,430 | 4,353,152 | 4,347,996 | 4,422,030 | 4,580,227 |
| Total | 49,968,674 | 48,227,331 | 48,528,295 | 40,214,009 | 30,253,568 | 33,322,650 | 34,958,444 | 35,460,737 | 36,411,148 | 34,702,140 | 35,797,603 | 33,748,051 | 35,876,148 |

Fuente: Secretaría de Turismo del Gobierno del Distrito Federal con datos de la Secretaría de Comunicaciones y Transportes.



Cuadro 9
Personas atendidas en módulos de información turística, 2002-2012

| Mes | 2002 | | | 2003 | | | 2004 | | | 2005 | | | 2006 | | |
|--------------|----------------|-----------------|----------------|----------------|-----------------|----------------|----------------|-----------------|----------------|----------------|-----------------|----------------|----------------|-----------------|----------------|
| | Nacionales | Internacionales | Total | Nacionales | Internacionales | Total | Nacionales | Internacionales | Total | Nacionales | Internacionales | Total | Nacionales | Internacionales | Total |
| Enero | 10,167 | 9,648 | 19,815 | 18,321 | 8,926 | 27,247 | 14,814 | 7,814 | 22,628 | 15,982 | 8,041 | 24,023 | 23,729 | 9,849 | 33,578 |
| Febrero | 10,295 | 9,036 | 19,331 | 16,014 | 7,907 | 23,921 | 12,401 | 6,859 | 19,260 | 15,198 | 7,829 | 23,027 | 19,356 | 8,424 | 27,780 |
| Marzo | 18,842 | 10,026 | 28,868 | 24,438 | 9,027 | 33,465 | 12,110 | 6,148 | 18,258 | 28,849 | 8,562 | 37,411 | 20,974 | 8,868 | 29,842 |
| Abril | 18,112 | 7,247 | 25,359 | 26,452 | 8,969 | 35,421 | 17,462 | 5,810 | 23,272 | 20,905 | 6,972 | 27,877 | 23,442 | 6,928 | 30,370 |
| Mayo | 12,732 | 7,051 | 19,783 | 21,068 | 7,985 | 29,053 | 12,237 | 5,263 | 17,500 | 20,436 | 7,525 | 27,961 | 17,072 | 6,053 | 23,125 |
| Junio | 11,920 | 7,145 | 19,065 | 19,248 | 8,889 | 28,137 | 10,940 | 5,705 | 16,645 | 25,588 | 7,999 | 33,587 | 20,258 | 7,448 | 27,706 |
| Julio | 14,704 | 9,811 | 24,515 | 30,865 | 12,110 | 42,975 | 20,531 | 9,083 | 29,614 | 31,432 | 9,796 | 41,228 | 25,437 | 9,709 | 35,146 |
| Agosto | 16,881 | 11,403 | 28,284 | 26,405 | 12,770 | 39,175 | 17,663 | 10,303 | 27,966 | 33,942 | 13,650 | 47,592 | 17,013 | 7,645 | 24,658 |
| Septiembre | 16,712 | 8,311 | 25,023 | 24,346 | 10,289 | 34,635 | 14,306 | 6,902 | 21,208 | 28,959 | 9,045 | 38,004 | 19,402 | 7,461 | 26,863 |
| Octubre | 17,264 | 8,625 | 25,889 | 22,683 | 8,809 | 31,492 | 17,140 | 7,455 | 24,595 | 27,224 | 10,753 | 37,977 | 22,252 | 7,169 | 29,421 |
| Noviembre | 15,405 | 9,030 | 24,435 | 20,163 | 8,674 | 28,837 | 17,004 | 7,836 | 24,840 | 29,966 | 13,447 | 43,413 | 25,297 | 7,766 | 33,063 |
| Diciembre | 21,314 | 11,181 | 32,495 | 17,086 | 7,900 | 24,986 | 17,855 | 7,627 | 25,482 | 36,939 | 9029 | 46,968 | 23,743 | 8046 | 31,789 |
| Total | 184,348 | 108,514 | 292,862 | 267,089 | 112,255 | 379,344 | 184,463 | 86,805 | 271,268 | 306,391 | 112,648 | 419,039 | 257,975 | 95,366 | 353,341 |

| Mes | 2007 | | | 2008 | | | 2009 | | | 2010 | | | 2011 | | |
|--------------|----------------|-----------------|----------------|----------------|-----------------|----------------|----------------|-----------------|----------------|----------------|-----------------|----------------|----------------|-----------------|----------------|
| | Nacionales | Internacionales | Total | Nacionales | Internacionales | Total | Nacionales | Internacionales | Total | Nacionales | Internacionales | Total | Nacionales | Internacionales | Total |
| Enero | 21,808 | 7,577 | 29,385 | 19,314 | 7,793 | 27,107 | 30,301 | 11,937 | 42,238 | 18,165 | 8,847 | 27,012 | 27,429 | 10,916 | 38,345 |
| Febrero | 20,624 | 7,827 | 28,451 | 19,897 | 7,574 | 27,471 | 23,826 | 10,893 | 34,719 | 16,380 | 8,485 | 24,865 | 22,921 | 9,884 | 32,805 |
| Marzo | 30,046 | 7,977 | 38,023 | 31,708 | 8,121 | 39,829 | 34,597 | 12,178 | 46,775 | 22,296 | 10,022 | 32,318 | 21,820 | 8,928 | 30,748 |
| Abril | 31,852 | 7,501 | 39,353 | 22,651 | 7,178 | 29,829 | 31,573 | 8,787 | 40,360 | 25,075 | 9,528 | 34,603 | 31,628 | 10,238 | 41,866 |
| Mayo | 20,622 | 6,377 | 26,999 | 21,879 | 7,298 | 29,177 | 18,066 | 3,090 | 21,156 | 18,677 | 8,036 | 26,713 | 25,575 | 8,701 | 34,276 |
| Junio | 20,739 | 5,609 | 26,348 | 23,187 | 7,674 | 30,861 | 24,642 | 5,312 | 29,954 | 20,106 | 9,270 | 29,376 | 26,545 | 8,561 | 35,106 |
| Julio | 25,109 | 7,116 | 32,225 | 35,504 | 11,545 | 47,049 | 25,143 | 6,994 | 32,137 | 29,794 | 13,991 | 43,785 | 25,326 | 9,124 | 34,450 |
| Agosto | 21,033 | 8,164 | 29,197 | 30,290 | 13,187 | 43,477 | 20,106 | 6,055 | 26,161 | 24,684 | 12,024 | 36,708 | 24,469 | 8,977 | 33,446 |
| Septiembre | 18,280 | 5,668 | 23,948 | 25,111 | 7,983 | 33,094 | 13,835 | 786 | 14,621 | 22,625 | 9,661 | 32,286 | 19,555 | 7,685 | 27,240 |
| Octubre | 25,498 | 7,047 | 32,545 | 28,832 | 8,748 | 37,580 | 24,101 | 8,359 | 32,460 | 23,953 | 9,929 | 33,882 | 30,029 | 9,812 | 39,841 |
| Noviembre | 22,905 | 7,484 | 30,389 | 31,687 | 8,741 | 40,428 | 21,920 | 8,501 | 30,421 | 18,802 | 9,142 | 27,944 | 25,952 | 9,700 | 35,652 |
| Diciembre | 23,330 | 7,352 | 30,682 | 37,775 | 9,852 | 47,627 | 28,855 | 5,831 | 34,686 | 29,770 | 12,420 | 42,190 | 28,082 | 9,092 | 37,174 |
| Total | 281,846 | 85,699 | 367,545 | 327,835 | 105,694 | 433,529 | 296,965 | 88,723 | 385,688 | 270,327 | 121,355 | 391,682 | 309,331 | 111,618 | 420,949 |

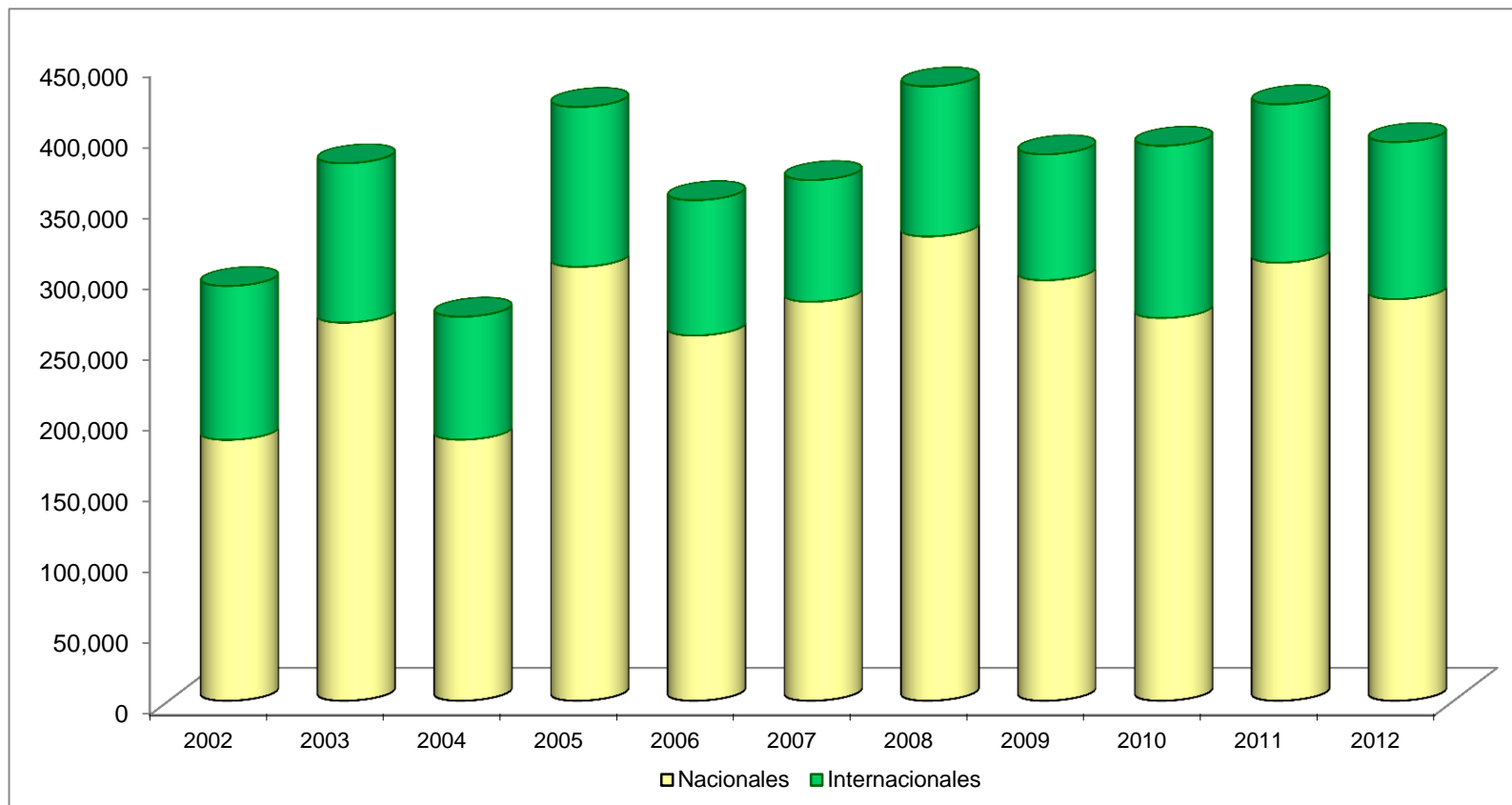
| Mes | 2012 | | |
|--------------|----------------|-----------------|----------------|
| | Nacionales | Internacionales | Total |
| Enero | 17,386 | 9,608 | 26,994 |
| Febrero | 19,201 | 9,251 | 28,452 |
| Marzo | 18,662 | 9,131 | 27,793 |
| Abril | 26,483 | 9,260 | 35,743 |
| Mayo | 21,053 | 8,083 | 29,136 |
| Junio | 22,849 | 8,376 | 31,225 |
| Julio | 29,814 | 9,896 | 39,710 |
| Agosto | 28,115 | 10,555 | 38,670 |
| Septiembre | 22,595 | 7,943 | 30,538 |
| Octubre | 25,116 | 9,324 | 34,440 |
| Noviembre | 23,929 | 9,193 | 33,122 |
| Diciembre | 28,483 | 9,960 | 38,443 |
| Total | 283,686 | 110,580 | 394,266 |

Fuente: Secretaría de Turismo del Gobierno del Distrito Federal.



Gráfica 12

Visitantes nacionales e internacionales atendidos en módulos de información turística, 2002-2012



| | 2002 | 2003 | 2004 | 2005 | 2006 | 2007 | 2008 | 2009 | 2010 | 2011 | 2012 |
|---------------|----------------|----------------|----------------|----------------|----------------|----------------|----------------|----------------|----------------|----------------|----------------|
| Nacionales | 184,348 | 267,089 | 184,463 | 306,391 | 257,975 | 281,846 | 327,835 | 296,965 | 270,327 | 309,331 | 283,686 |
| Internacional | 108,514 | 112,255 | 86,805 | 112,648 | 95,366 | 85,699 | 105,694 | 88,723 | 121,355 | 111,618 | 110,580 |
| Total | 292,862 | 379,344 | 271,268 | 419,039 | 353,341 | 367,545 | 433,529 | 385,688 | 391,682 | 420,949 | 394,266 |

Fuente: Secretaría de Turismo del Gobierno del Distrito Federal.



Cuadro 10
Llamadas atendidas a través del 01 800, 2007-2012

| Mes | 2007 | 2008 | 2009 | 2010 | 2011 | 2012 |
|--------------|--------------|---------------|---------------|--------------|--------------|--------------|
| Enero | 125 | 483 | 557 | 594 | 472 | 268 |
| Febrero | 121 | 460 | 371 | 438 | 361 | 405 |
| Marzo | 151 | 1,695 | 509 | 1,036 | 461 | 397 |
| Abril | 203 | 762 | 1,475 | 984 | 912 | 901 |
| Mayo | 408 | 1,026 | 566 | 489 | 348 | 368 |
| Junio | 376 | 1,067 | 587 | 627 | 310 | 359 |
| Julio | 1,607 | 2,089 | 1,719 | 854 | 671 | 945 |
| Agosto | 703 | 806 | 986 | 653 | 335 | 489 |
| Septiembre | 807 | 934 | 1,719 | 692 | 255 | 471 |
| Octubre | 823 | 872 | 489 | 569 | 204 | 579 |
| Noviembre | 878 | 722 | 571 | 855 | 417 | 635 |
| Diciembre | 849 | 693 | 980 | 632 | 892 | 785 |
| Total | 7,051 | 11,609 | 10,529 | 8,423 | 5,638 | 6,602 |

Fuente: Secretaría de Turismo del Gobierno del Distrito Federal.



Cuadro 11
Número de visitas al Sitio Oficial, 2007-2012

| Mes | 2007 | 2008 | 2009 | 2010^{1/} | 2011 | 2012 |
|--------------|------------------|------------------|------------------|--------------------------|------------------|------------------|
| Enero | 104,700 | 103,956 | 151,674 | 219,007 | 235,137 | 151,740 |
| Febrero | 130,875 | 106,194 | 122,594 | 291,759 | 195,321 | 159,345 |
| Marzo | 113,425 | 164,191 | 209,594 | 295,350 | 219,164 | 161,271 |
| Abril | 112,567 | 165,107 | 173,740 | 276,274 | 360,246 | 177,304 |
| Mayo | 125,232 | 159,263 | 157,780 | 275,321 | 205,763 | 194,292 |
| Junio | 90,000 | 129,145 | 172,850 | 235,444 | 224,981 | 168,511 |
| Julio | 49,500 | 133,497 | 175,340 | 248,134 | 247,850 | 203,340 |
| Agosto | 92,935 | 138,200 | 190,210 | 208,573 | 249,214 | 241,352 |
| Septiembre | 90,938 | 162,620 | 191,244 | 253,240 | 184,322 | 254,496 |
| Octubre | 112,036 | 175,138 | 197,582 | 273,654 | 205,352 | 348,215 |
| Noviembre | 95,813 | 185,251 | 259,723 | 281,349 | 218,377 | 215,646 |
| Diciembre | 81,968 | 110,221 | 289,713 | 406,234 | 197,411 | 145,967 |
| Total | 1,199,989 | 1,732,783 | 2,292,044 | 3,264,339 | 2,743,138 | 2,421,479 |

Nota:

^{1/}El incremento del número de visitantes se explica por la realización de una campaña de promoción en línea.

Fuente: Secretaría de Turismo del Gobierno del Distrito Federal.



Cuadro 12
Emisión de pases turísticos por entidad, 2009–2012^{1/}

| Entidad | 2009 ^{2/} | 2010 | 2011 | 2012 |
|---------------------|--------------------|---------------|---------------|---------------|
| Aguascalientes | 381 | 674 | 1,301 | 2,051 |
| Baja California | 54 | 85 | 141 | 142 |
| Baja California Sur | 18 | 26 | 41 | 51 |
| Campeche | 105 | 145 | 287 | 326 |
| Chiapas | 225 | 390 | 577 | 835 |
| Chihuahua | 154 | 235 | 356 | 552 |
| Coahuila | 259 | 550 | 943 | 1,175 |
| Colima | 112 | 185 | 368 | 518 |
| Durango | 67 | 98 | 223 | 313 |
| Guanajuato | 508 | 169 | 384 | 435 |
| Guerrero | 744 | 1,608 | 3,204 | 5,477 |
| Hidalgo | 103 | 136 | 426 | 432 |
| Jalisco | 1,253 | 2,244 | 4,371 | 6,890 |
| Michoacán | 200 | 269 | 414 | 478 |
| Morelos | 139 | 240 | 429 | 568 |
| Nayarit | 69 | 104 | 195 | 277 |
| Nuevo León | 1,021 | 1,388 | 2,685 | 3,812 |
| Oaxaca | 219 | 338 | 571 | 725 |
| Puebla | 97 | 134 | 293 | 345 |
| Querétaro | 113 | 142 | 391 | 513 |
| Quintana Roo | 185 | 272 | 459 | 528 |
| San Luis Potosí | 354 | 655 | 1,696 | 3,411 |
| Sinaloa | 122 | 179 | 312 | 418 |
| Sonora | 50 | 68 | 139 | 186 |
| Tabasco | 450 | 678 | 1,131 | 1,432 |
| Tamaulipas | 340 | 536 | 960 | 1,449 |
| Tlaxcala | 75 | 71 | 80 | 89 |
| Veracruz | 747 | 1,576 | 3,774 | 6,153 |
| Yucatán | 113 | 147 | 218 | 253 |
| Zacatecas | 98 | 211 | 458 | 702 |
| Extranjero | 271 | 298 | 377 | 585 |
| Total | 8,646 | 13,851 | 27,204 | 41,121 |

Notas:

^{1/} Las cifras pueden no coincidir con las publicadas anteriormente, debido a que no todos los pases gestionados son utilizados.

^{2/} Datos a partir de marzo. Cifras revisadas.

Fuente: Secretaría de Turismo del Gobierno del Distrito Federal con datos de la Secretaría del Medio Ambiente.